



La Salle College



School Performance Report 2023

Contents Page

Part 1

Contextual information	1
Teacher standards and qualifications ...	2
Workforce composition	2
Student attendance in school	3
NAPLAN annual attainment	4
Parent, teacher, student satisfaction	5
School income	6
Year 12 WACE	7
Post-school	8
School improvement planning	9

Part 2

School Advisory Council Chair Report ...	12
--	----

Transforming tomorrow's

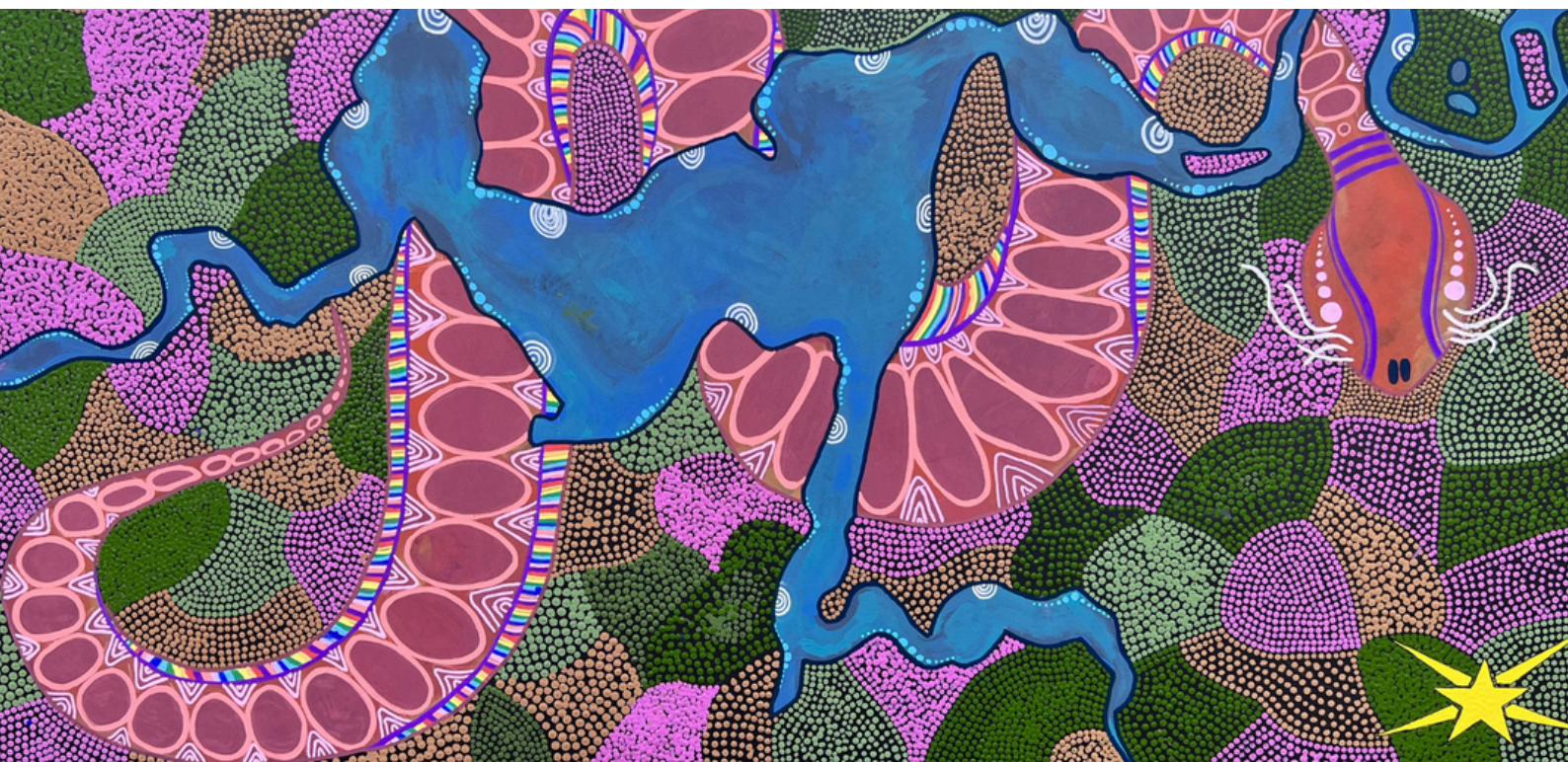
Hearts. Minds. Lives.



Acknowledgement to Country

La Salle College respects and acknowledges the Traditional Custodians of the land on which we worship, work and learn, and recognise their continuing connection to land, water and community. We pay respect to Elders past, present and emerging.

La Salle College on the Derbarl Yerrigan (Swan River)





Contextual information

Established in 1954, La Salle College is an innovative Catholic co-educational secondary school guided by Lasallian principles. We offer a range of pathways to cater to the diverse needs of our students, including direct entrance to university (ATAR courses) and a comprehensive range of Vocational Education and Training (VET) opportunities. These VET courses provide nationally accredited qualifications and valuable work experience, paving the way to post-school destinations such as TAFE, university, traineeships and apprenticeships.

La Salle College provides excellent pastoral care, with a strong focus on student wellbeing. We embrace the uniqueness of every individual, creating a safe, inclusive, and welcoming atmosphere that allows everyone to learn and flourish in their own distinctive way.

We have outstanding facilities and outdoor spaces including a 10-lane swimming pool, Performing Arts Centre, Chapel, Trade and Skills Centre, and a double court Sports Centre. Our modern and innovative learning environment aims to inspire our students to explore their potential both within and beyond the classroom.

Our Vision for Learning, 'Transforming tomorrow's hearts, minds, and lives,' continues our founder's mission to provide holistic development opportunities for our students. Each student is celebrated as a unique individual and is encouraged to consider their relationship with God. We emphasise the importance of serving others, especially those in need, and build strong relationships to strengthen our identity and community. Through these connections, we transform hearts.

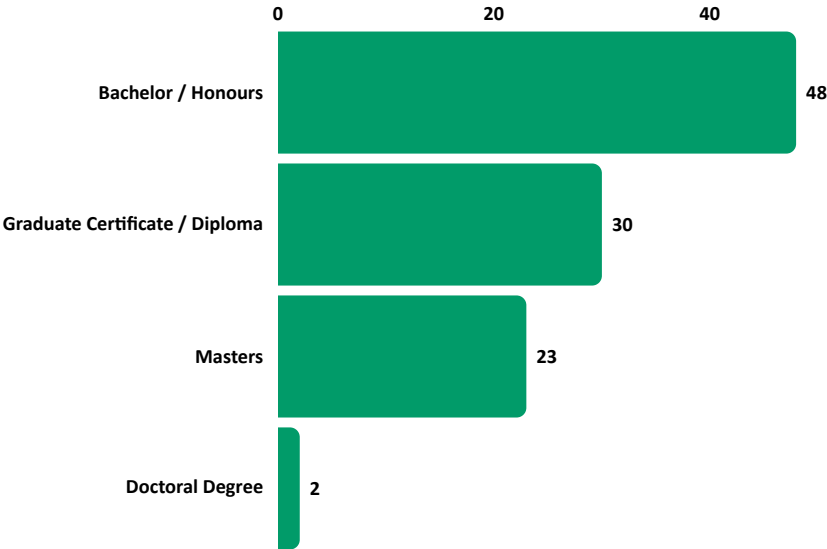
La Salle College empowers its students to become active learners. Inspired by the Brothers before us, our teaching strategies evolve to inspire lifelong learning in an ever-changing world. Engaging the developing minds of our students is central to our mission. Through flexibility and engagement, we transform minds. La Salle College cultivates good people who strive for personal excellence beyond academic achievement. We believe that success involves taking risks and demonstrating resilience through challenges. This mindset allows our students to become true Lasallians who enrich the lives of others. Through our courage, we transform lives. As a diverse and inclusive community, we are committed to transforming tomorrow.

In 2023, the student body was comprised of 1312 students, with 49% boys and 51% girls. 28% of students have a language background other than English and 6% of our students identify as Indigenous.



Teacher standards and qualifications

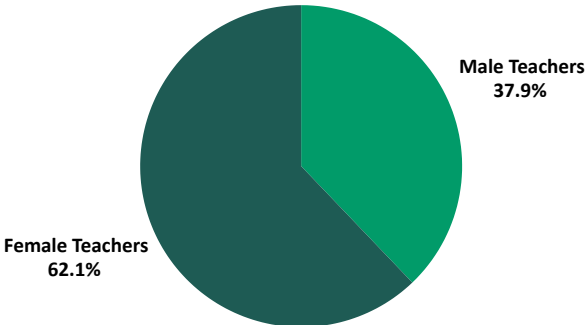
In 2023, La Salle College employed 103 teaching staff. The highest qualification of staff is quantified in the graph below.



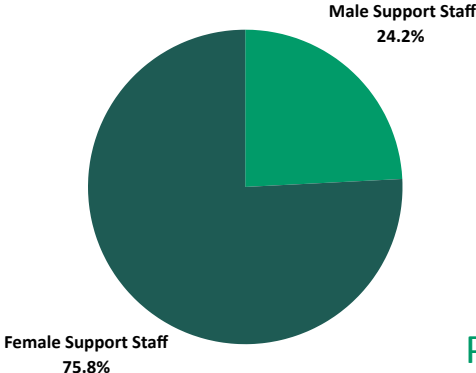
Workforce composition

In 2023, La Salle College employed 94 full time teaching staff, 30 full time non-teaching staff, 9 part time teaching staff, 32 part time non-teaching staff and 3 part time non-teaching Indigenous staff

Teaching Staff



Support Staff



Student attendance in school

La Salle College had a student attendance record of 88.36% in 2023. Regular attendance at school is essential if students are to maximise their potential.

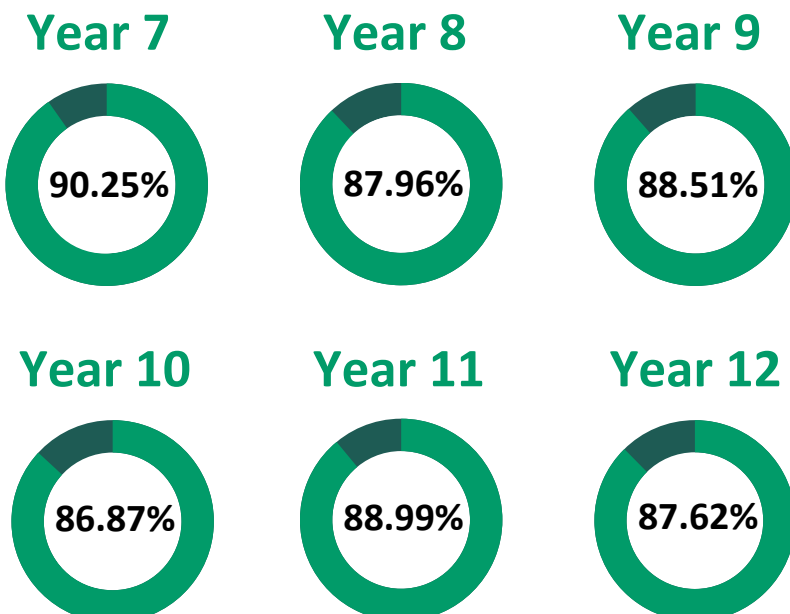
The College, in partnership with parents is responsible for promoting the regular attendance of students. Whilst parents are legally responsible for attendance of their children, College staff, as part of their duty of care, monitor absences.

Parents and guardians are required to inform the College of any student absences. When students have been marked absent and no notification has been received, a follow up SMS mobile phone message is sent to parents in the morning on the day of absence.

Pastoral Care Advisors monitor and follow up all student absences within their Pastoral Care Group. Classroom teachers complete daily attendance electronically which are processed after each period by Student Reception. On return to school after an absence, students are required to provide written confirmation of the absence or lateness from the parent or guardian. This communication is registered in the College's Learning Management System, SEQTA.

General patterns of attendance are monitored by the relevant Leaders of Wellbeing and Deputy Principals, with attendance concerns followed up in accordance with Catholic Education Western Australia's student attendance guidelines.

Student attendance percentages by Year Group



National Assessment Program Literacy and Numeracy (NAPLAN) attainment

NAPLAN participation at the College was 98% in 2023.

NAPLAN results are reported using a scale, that has an average score across all students of 500.

The spread of scores has been set so that just over two thirds of students' scores lie between 400 and 600.

The tables below show the school averages for La Salle College students in Year 7 and 9 for Reading, Writing, Language Conventions (Spelling, Punctuation & Grammar) and Numeracy tests.



Year 7 NAPLAN Results

NAPLAN	Numeracy	Reading	Grammar	Writing	Spelling
La Salle College Average Year 7	527	529	523	535	536
National Year 7 Average	538	531	539	534	539

Year 9 NAPLAN Results

NAPLAN	Numeracy	Reading	Grammar	Writing	Spelling
La Salle College Average Year 9	566	566	546	576	565
National Year 9 Average	568	564	557	567	566



Parent, student and teacher satisfaction

In 2023, La Salle College participated in the Diagnostic Inventory of School Alignment (DISA) Survey, which gathered the views of students, staff and parents. A summary of the key findings is detailed below:

Successes and Achievements:

- Staff believe students form positive relationships.
- Overall staff and some students do not believe that students feel a sense of pride in the school.
- Parents believe the grounds look good and are well maintained.
- Staff feel they are delivering a high level of care, however, some parents and students feel differently.

School Vision and Structures:

- Overall staff find the schools vision and structures to be positive and there is a strong belief in the school structures, values and successes are promoted.
- Some students do not share in the Vision for Learning in the same way as teachers.
- Parents and some students believe they have a limited voice in decision making however staff believe the school has a clear process for ongoing improvement.

The School and its Communities:

- Staff and parents encourage students to care for the community and contributions to the community are celebrated.
- All students and staff recognise the collaboration between staff, however, staff believe students need to work towards being more accountable for their learning.
- Parents and some students believe that parents hold high expectations for student achievement.
- Staff believe that students don't always hold themselves to high expectations and some students agree.
- Staff and parents believe they have created a community that should be celebrated and students feel staff work well together.

School Teaching, Learning and Assessment

- All groups agree students need to have more say in the way their learning is conducted.
- Staff view themselves to be a collaborative group and demonstrate best practice.
- Staff feel that teaching and learning at La Salle College is up to date, however, some parents and some students do not share this view.
- Staff believe that the school has developed a shared understanding of teaching and learning and has agreed school wide pedagogy grounded in theory in order to improve student outcomes.

School Work Practices and Organisation

- Staff and parents believe that they work well with groups outside of the school.
- Students mostly believe what they learn is out of date and needs to be improved in order to better prepare them for the future.
- Students feel that the spaces and resources do not improve their achievement.
- Parents and students believe that the school day needs reorganisation to allow or support teachers to expand practices.
- Staff and parents believe the school uses technology to enhance learning.

School income

Financial information about La Salle College for 2023 is available on the My School website www.myschool.edu.au





Year 12 WACE

The College provides a variety of Senior Secondary Pathways in line with the School Curriculum and Standards Authority (SCSA) to enable the successful attainment of the Western Australian Certificate of Education (WACE).

These pathways allow students to attain an ATAR for direct university entrance, alternative entry pathways to university and vocational pathways including, workplace learning and nationally recognised certificates. La Salle College students continued to achieve commendable results in 2023.

Overall course completions are detailed below.

Vocational Education

52.49%

Attained a Year 12 certificate or equivalent VET qualification

Students achieved a Certificate II or higher over Year 11 and 12

WACE Achievement

96.50%

of students achieved their WACE



Post-School

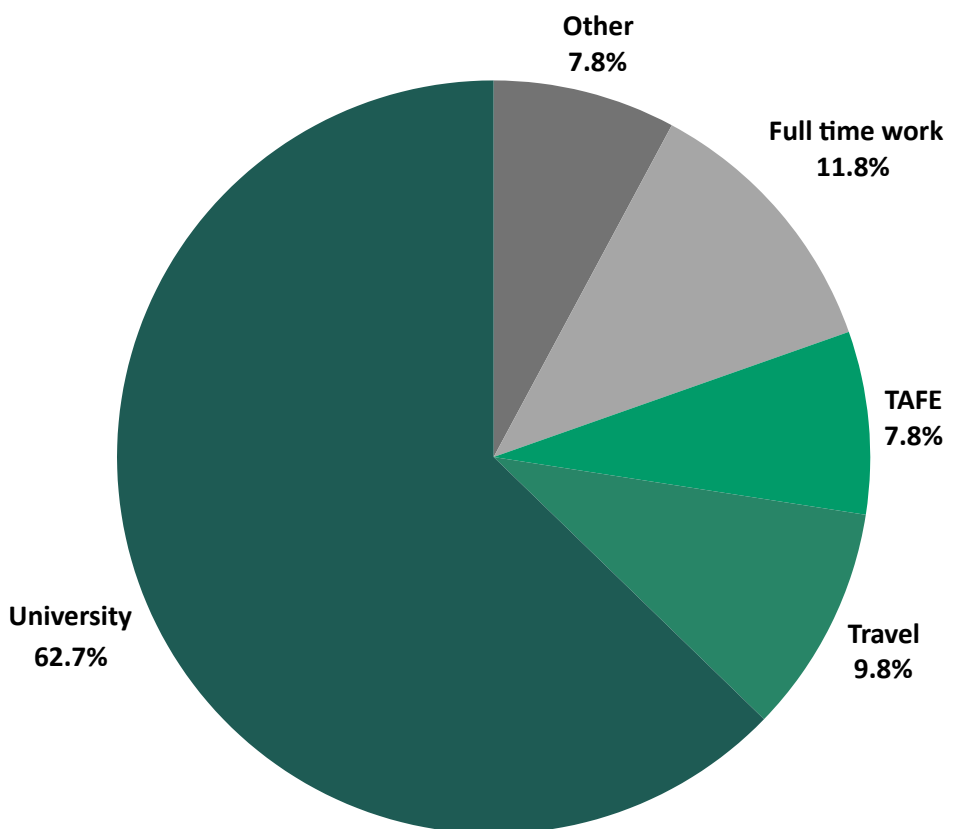
In 2023 La Salle College had 181 students enrolled in Year 12.

Year 12 students responded to the College Exit Survey and indicated a mix of post-school destinations including:

- Tafe
- University
- Full time work
- Travel
- Other

Ninety-five (95) students applied for a public university, with 93 being offered a place.

The pie chart below details post-school destination data.



School improvement planning

La Salle College’s mission is to develop lifelong learners who are Christ-centred, resilient and innovative contributors to our ever-changing world.

This led us to five school improvement goals for 2023:

- Faith Formation
- Catholic Identity
- Education
- Community
- Stewardship



Faith Formation

Goal	2023 Progress
<p>Staff use the ‘Faith’ value to identify connections between units of work and College values</p>	<ul style="list-style-type: none"> • Learning Areas identified connections to faith in each unit of work • Vice Principal and Deputy Principal for Catholic Identity and Mission worked with Leaders of Learning to ensure inclusion in teaching and learning programs • Examples shared during professional learning sessions
<p>Staff to be aware of and experience different expressions of an inclusive faith</p>	<ul style="list-style-type: none"> • Staff explored different expressions of faith during sessions with Father Rob Galea and practical workshops • Twilight and online retreats were also offered
<p>Deepening staff members skills in constructing prayer experiences for staff and students/ promotion of house prayers</p>	<ul style="list-style-type: none"> • ‘How to’ guide developed for staff prayer • Active engagement of all staff in Monday morning prayer • Prayer experiences developed during Leader of Learning meetings



Catholic Identity

Goal	2023 Progress
<p>Strengthen our people’s understanding of our faith values and their ability to live them</p>	<ul style="list-style-type: none"> • Examples reviewed of how other organisations express their values • Development of College Values Matrix • Staff and students able to articulate College values and relate these to their personal and school life

Education

Goal	2023 Progress
<p>Develop a whole school literacy and numeracy plan</p>	<ul style="list-style-type: none"> • Relevant data audited • Working party formed • Current research reviewed • Staff Professional Learning held on literacy strategies • ACER PAT testing data analysed and evaluated • 2024 plan drafted
<p>Creation and implementation of La Salle Wellbeing Framework based on CEWA framework</p>	<ul style="list-style-type: none"> • Formation of Wellbeing Working Party consisting of members of the College Wellbeing Team and House Coordinators. The working party contributes ideas and feedback related to the College Strategic Plan, specifically the Wellbeing Framework. • Implementation/ ongoing review of Djinda Wellbeing Program • Improved organisation of protective behaviours program • Engagement of wellbeing guest speakers for students/staff



Community

Goal	2023 Progress
Develop an Aboriginal Education Plan that improves inclusion and educational outcomes	<ul style="list-style-type: none"> • Focus areas and professional learning developed from staff feedback • Incorporation of culturally appropriate learning experiences • Aboriginal Education Plan finalised
Develop a process that identifies, develops and celebrates leadership skill in students	<ul style="list-style-type: none"> • Number of students applying for leadership positions has increased • Counsellors spent time on the Student Council Planning Camp developing detailed project plans across three categories. These were House projects, Year Level projects and Whole School projects. These plans are being implemented in 2024.

Stewardship

Goal	2023 Progress
Staff access and respond to feedback to develop their professional capacity	<ul style="list-style-type: none"> • Completion of individual professional growth plans • Professional Learning held on effective feedback • Formation of growth partnerships • Scheduled feedback sessions
Completion of whole campus masterplan	<ul style="list-style-type: none"> • Architect selected and engaged • Educational Support Centre revival planned • New Boarding House project ongoing

Chairperson's Report

As we gather here today at the close of another successful year at La Salle College, it has been a year filled with challenges, triumphs, and moments of great unity, and I am proud to stand before you to reflect on our journey and express my deepest gratitude.

First and foremost, I would like to recognise and express my profound gratitude to the members of our Senior Leadership team and Advisory Council members. Your wisdom, guidance, and commitment to the values of our Catholic College have been a beacon of light on our path.

Your insight, leadership, and vision have helped us make informed decisions and navigate the ever-changing educational landscape. Your selfless dedication to the betterment of our College is truly commendable, and we deeply appreciate of your service.

I would also like to extend a heartfelt appreciation to the dedicated parents and friends who make up our Parents and Friends Association (P&F). Your tireless efforts, countless hours of volunteer work, and unwavering support have been instrumental in making this year a remarkable success.

Your commitment to enhancing the educational experience of our students, your participation in school events, and your tireless fundraising efforts have allowed us to strengthen our community and provide valuable resources to our school. Without your dedication, the accomplishments of this year would not have been possible. Thank you for your invaluable contributions.

As we reflect upon the achievements of this year, we cannot forget the incredible efforts of our teachers, staff, and students. They have worked tirelessly to ensure that our school continues to be a place of academic excellence and spiritual growth. Our students have shown remarkable dedication to their studies, their extracurricular activities, and to the values we hold dear. Our teachers have gone above and beyond to nurture the minds and souls of our students. Their hard work and unwavering commitment to our ethos are deeply appreciated.

In closing, as we look to the future, let us remember the strength and unity that our community has demonstrated in the face of adversity and the countless blessings that we have enjoyed this year. Together, we have made a difference, and we will continue to build a bright future for the generations to come.

Thank you, once again, your contributions have made this year exceptional, and your continued support will be instrumental in shaping our future. May God bless you all, and may He continue to guide our journey here at La Salle.

Here's to a successful year behind us and a promising future ahead.

Many blessings always,
Stacey Jackson | Chairperson- College Advisory Council



Transforming tomorrow's
Hearts. Minds. Lives.

